

Security
Accessories





10-101-14 CHASE MOUNTED SECURITY MIRROR—REAR MOUNTING

Frame 14 gauge type 304 stainless steel with satin finish, corners welded and ground smooth. Unit provided with fiberboard backing and six "T" nuts welded on back for rear mounting. Specify wall thickness if greater than 152 mm.

Suffix	Material	Finish
13	¼" thick tempered glass	Polish mirror
14	20 gauge type 304 stainless steel	No. 8 mirror polish
17	¼" thick Plexiglas	Polish mirror
31	22 gauge steel	Chrome plated

Overall Dimensions:
305 x 406 x 16 mm



10-104 FRAMED MIRROR—FRONT MOUNTING

Unit consists of wall mounting plate fabricated of 7 gauge type 304 stainless steel with four countersunk mounting holes and eight tapped holes. Formed mirror fabricated of 18 gauge type 304 stainless steel with #8 mirror polish finish provided with eight dimpled holes through integral frame and ¼-20 x ¼" Torx® head screws for securing to wall mounting plate.

Overall Dimensions:
256 x 294 x 11 mm



10-105-14 SECURITY FRAMED MIRROR—FRONT MOUNTING

Frame 14 gauge type 304 stainless steel with satin finish, corners welded and ground smooth. Front mounting furnished with Torx® vandal-resistant 150 mm machine screws.

Suffix	Material	Finish
13	¼" thick tempered glass	Polish mirror
14	20 gauge type 304 stainless steel	No. 8 mirror polish
17	¼" thick Plexiglas	Polish mirror
31	22 gauge steel	Chrome plated

Overall Dimensions:
305 x 406 x 16 mm



10-107 ONE-PIECE FRAMED MIRROR WITH ROUNDED CORNERS—FRONT MOUNTING

One-piece 18 gauge type 304 stainless steel formed mirror with #8 mirror polish finish, integral frame, rounded corners and six mounting holes.

Overall Dimensions:
305 x 406 x 6 mm



10-108 ONE-PIECE FRAMED MIRROR WITH ROUNDED CORNERS—REAR MOUNTING

One-piece 18 gauge type 304 stainless steel formed mirror with #8 mirror polish finish, integral frame, rounded corners and six “T” nuts welded on back for rear mounting.

Overall Dimensions:
305 x 406 x 6 mm



10-110 RECESSED TOILET TISSUE HOLDER —REAR MOUNTING

Fabricated of 16 gauge type 304 stainless steel, satin finish exterior, glass blasted satin finish interior. 114 mm interior depth accommodates one standard toilet paper roll. Hidden contraband causes roll to project from holder allowing detection. Two “T” nuts welded on back for rear mounting.

MODEL OPTION:
110-A 184 mm DIA

Overall Dimensions:
184 mm DIA

Rough Wall Opening:
152 mm DIA



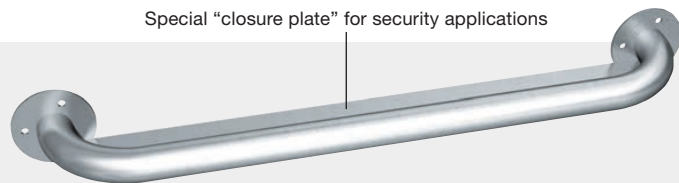
10-110-1 SQUARE RECESSED TOILET TISSUE HOLDER—REAR MOUNTING

Fabricated of 14 gauge type 304 stainless steel with satin finish exterior, glass blasted satin finish interior 114 mm deep accommodates one standard toilet tissue roll. Flange is 179 mm square.

MODEL OPTION:
10-110-13 Front mounted holder.

Overall Dimensions:
180 x 180 x 114 mm

Rough Wall Opening:
140 mm DIA



Special “closure plate” for security applications

10-158/159/160/161/162/163/164/165/166/167/168/169 SECURITY GRAB RAILS

Tubing 18 gauge and flanges 3 mm thick stainless steel type 304 with satin finish. Closure plate is 3 mm thick. All welded construction.

MODEL OPTIONS:

Rear Mounted	Length	Front Mounted	Length
10-158	457 mm	10-159	457 mm
10-160	610 mm	10-162	762 mm
10-161	762 mm	10-164	914 mm
10-163	914 mm	10-165	610 mm
10-166	1067 mm	10-167	1067 mm
10-168	1219 mm	10-169	1219 mm



10-120 CLOTHES HOOK—FRONT MOUNTING

Bracket 11 gauge, hook 7 gauge type 304 stainless steel with satin finish. If hook is excessively loaded, it will snap down for safety. Unit has four holes through flange for front mounting.

Overall Dimensions:
76 x 127 x 78 mm



10-121 CLOTHES HOOK—REAR MOUNTING

Bracket 11 gauge, hook 7 gauge type 304 stainless steel with satin finish. If hook is excessively loaded, it will snap down for safety. Unit has four studs welded on back for rear mounting.

Overall Dimensions:
76 x 127 x 78 mm



10-122 SQUARE CLOTHES HOOK—REAR MOUNTING

Fabricated of 12 gauge type 304 stainless steel with a satin finish. Back plate is fabricated of 14 gauge stainless steel. If hook is excessively loaded, it will snap down for safety. Unit has four studs welded on back for rear mounting.

MODEL OPTION:
10-123 Front mounted hook.

Overall Dimensions:
108 x 108 x 57 mm



10-140 RECESSED SOAP DISH—REAR MOUNTING

Soap dish 16 gauge stainless steel type 304 with satin finish. One-piece drawn construction with beveled trim and embossments for air circulation and drainage. Unit has two "T" nuts welded on back for rear mounting.

Overall Dimensions:
187 x 152 x 76 mm

Rough Wall Opening:
165 x 127 x 70 mm



10-127 CLOTHES/TOWEL HOOK STRIP—FRONT MOUNTING

Wall plate 14 gauge with beveled edges, 11 gauge brackets and four 7 gauge hooks. Stainless steel type 304 with satin finish. Hooks snap down for safety if excessively loaded. Unit has six mounting holes through back for front mounting.

Overall Dimensions:
457 x 140 x 76 mm



10-128-1 BOOK SHELF/CLOTHES HOOK—FRONT MOUNTING

Shelf and back plate are 14 gauge stainless steel type 304 with satin finish. Hooks are 12 gauge stainless steel and back plate is 14 gauge stainless steel. Seams are welded and ground smooth. Hooks snap down for safety if excessively loaded. Unit has six holes through back for front mounting.

Overall Dimensions:
457 x 279 x 203 mm



10-129 CLOTHES/TOWEL HOOK STRIP—FRONT MOUNTING

Fabricated of 14 gauge stainless steel type 304 with satin finish. Hooks snap down for safety if excessively loaded. Six holes through back for front mounting.

Overall Dimensions:
457 x 140 x 57 mm



10-130 RECESSED SHELF—REAR MOUNTING

Shelf 16 gauge type 304 stainless steel, corners welded and ground smooth. 1" (25 mm) wide beveled satin finish trim. Interior glass blasted finish. Unit has four studs welded on back for rear mounting.

Overall Dimensions:
457 x 178 x 102 mm

Rough Wall Opening:
141 x 419 mm

WELCOME TO THE SINGLE LARGEST COLLECTION OF WASHROOM ACCESSORIES ANYWHERE—BAR NONE



Hand Dryers



Soap Dispensers



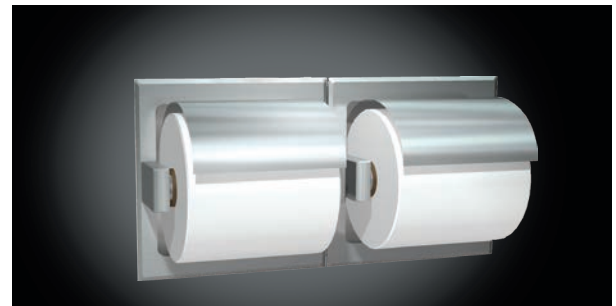
Mirrors



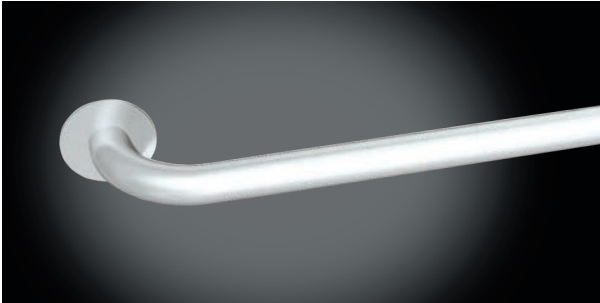
Combination Units



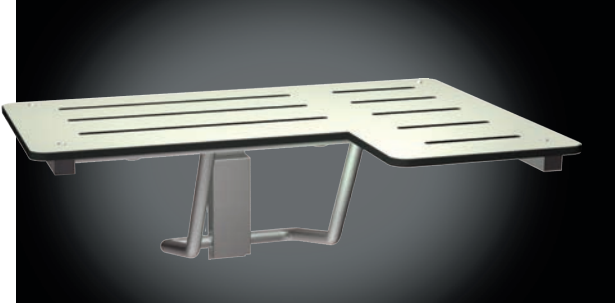
Bathroom Accessories



Toilet Paper Dispensers



Grab Rails



Shower Seats



Baby Change Stations



Shelves



Shower Products



Waste Bins



Back Rests



Security Accessories



Welcome to ASI JD MACDONALD: where innovation, speed and reliability provide peace of mind

JD MacDonald expanded into Washroom Accessories in 1959 - since then we have developed a following among Building Owners, Architects and Construction Professionals who count on us because we consistently deliver on a promise of quality, value, impeccable customer service and choice.

In 2013 JD MacDonald was acquired by the ASI Group and as the newly founded ASI JD MacDonald, we continue to provide more choices in hand dryers, paper towel dispensers, waste bins, combination units, grab rails, baby changing stations, soap dispensers, toilet paper dispensers and much more. Since then, we've expanded into toilet partitions, offering options in both structural and compact laminate. In addition we also offer a range of waste management products including garbage chutes, linen chutes and rotobins.

ASI GROUP

Privately owned and operated since inception the ASI Group now has operating units and offices in the US, Canada, Australia, Belgium, UK, Middle East and China, with sales in over 50 countries.

For over 50 years our companies have been known for innovative products and the widest choice in product and material for Washroom Accessories, Toilet Partitions, Lockers and other storage devices. Our nimble management philosophy allows us to deliver more products in 48 hours than anyone else in our industry and our flexibility allows us to create unique products to suit specific needs.

You will find one common thread that ties our family of companies together - a singular focus on our customer. That focus is captured in our mission statement: **"To make our customers successful by providing a value greater than price and an excellent service experience."** www.asigroup.us

OUR GLOBAL REACH: Allow our experienced architectural team to help you deliver on your promise of excellence as they have delivered on some of the most prestigious projects worldwide:

Corporate World HQ: Apple Corp., Coca Cola Corp., Facebook, Goldman Sachs (US)

Intl. Offices: Microsoft, Intel (China), HSBC (Egypt), Residence Palace, Antwerp Port House (Belgium)

Airports: Canberra Airport (AUS), JFK Intl., DFW Intl., Logan Intl. (US), Hong Kong Intl. (China)

Education: NYU Dormitories (UAE), Yale Univ., Stanford Univ., Univ. of Notre Dame (US)

Medical: Red Cross (AUS), Memorial Sloane Kettering, Mayo Clinic (US), Al Mafraq Hosp. (UAE)

Hospitality: Crown Plaza (Jordan), Ritz Carlton (US), Kempinski Hotel, Intercontinental Hotel (Qatar)

Entertainment: Shanghai Disney (China), Plopsa Water Parks (EU), MGM Grand Casino, Lincoln Center (US)

Stadiums: Yankee Stadium, Madison Square Garden (US), Doha Rugby and Football Stadium (Qatar)

Government: Royal Australian Airforce Base (AUS), US Embassy (China), Great Lakes Naval Base (US)

MORE CHOICES: Every building type, physical environment, project size and geography

- Hospitals and Health Care
- Universities and School Districts
- Office Buildings
- Stadiums and Fitness Facilities
- Airports and Travel Hubs
- Government Buildings & Convention Centers
- Prisons and Security Facilities
- Restaurants and Chain Stores
- Hotels and Multi-Family Buildings
- Theatres and Entertainment Complexes
- Museums and Libraries
- Theme Parks and Shopping Malls
- Parks and Recreation Facilities
- Warehouses / Manufacturing / Food Service Plants

ASI JD MacDonald: Your single source for privacy, hygiene, safety and eco-friendly products.



ASI JD MacDonald Pty Ltd
ABN: 61 162 663 872
E: enquiry@asijdmacdonald.com.au
P: 03 8558 7200 F: 03 9548 1141

Free Call 1800 023 441

www.asijdmacdonald.com.au