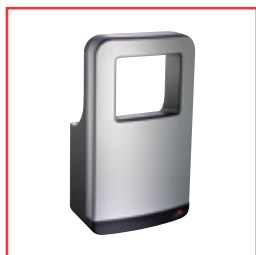


## Hand Dryers





# DISTINCT MODELS TO MATCH ANY ASTHETIC AND PERFORMANCE NEED



**TRI-Umph™**

High-Speed, Ultra-Fast Drying  
Suitable For High Traffic Areas



**TURBO-Dri™**

High-Speed, Robust Design  
Suitable For High Traffic Areas



**TURBO-Slim™**

High-Speed, Compact Design  
Suitable For High Traffic Areas



**TURBO-Chic**

High-Speed, Elegant Design  
Suitable For High Traffic Areas



**Autobeam**

Classic Design, Automatic  
Suitable For High Traffic Areas



**Touchdry**

Classic Design, Button Operation  
Suitable For High Traffic Areas



**Applause**

Stylish, Ultra-Quiet,  
Suitable For Low Traffic Areas  
Requiring Low Noise



**Applause Plus**

Low Cost, Automatic  
Suitable For Low Traffic Areas



**TURBO-Tuff™**

High Speed, Recess Mount  
Suitable for High Traffic Areas



**TURBO 3-in-1**

Practical 3in1 Design  
Suitable For Any Washroom



**Select Classic**

Sophisticated 3in1 Design  
Suitable For High-End Washrooms



**Piatto™ 3-in-1**

Fully Recessed Design  
Suitable For High-End Washrooms

**Decibel Level**  
**Min:** 61 dB-A @ 2M  
**Max:** 67 dB-A @ 2M

**Dry Time:** Approx. 15 seconds



#### **10-64671-2-A SELECT CLASSIC G2 3-IN-1**

Integrated stainless steel cabinet with three features in one installation. Manufactured from high quality 304 stainless steel Select Classic G2 provides a fully automatic high-speed hand dryer with adjustable air speed and temperature settings, paper towel dispenser and large capacity waste bin (26L). Easy installation and service via a security locked front door. Protected for shipment by PVC coating on all surfaces. 5 year warranty on hand dryer.

**Overall Dimensions:** 440 x 1515 x 202 mm  
**Wall Opening:** 408 x 1494 x 120 mm (minimum)

#### **Electrical Specifications:**

Motor: 500 Watt, 22 - 29 KRPM, (adjustable), brush type, dual ball bearings  
 Voltage: 220 - 240 VAC, 50/60 Hz  
 Heater: 275 - 500 Watt  
 Current: 3 - 4 Amps @ 240 VAC

**Decibel Level**  
**Min:** 61 dB-A @ 2M  
**Max:** 67 dB-A @ 2M

**Dry Time:** Approx. 15 seconds



#### **10-64672-2-41 PIATTO™ 3-IN-1**

Completely recessed in the plane of the wall without any protrusion. All hinges are concealed as is the latching system, leaving no visible hardware. Doors are made of phenolic and close silently. Features a high-speed automatic hand dryer with adjustable speed and temperature settings and 26 L waste bin. Dispenses 400 standard C-fold or 500 standard multi-fold paper towels. 5 year warranty on hand dryer.

**Overall Dimensions:** 391 x 1407 x 191 mm  
**Wall Opening:** 392 x 1408 x 194 mm  
**Optional Finish:**

#### **Electrical Specifications:**

Motor: 500 Watt, 22 - 29 KRPM (adjustable), brush type, dual ball bearings  
 Voltage: 220 - 240 VAC, 50/60 Hz  
 Heater: 275 - 500 Watt  
 Current: 3 - 4 Amps @ 240 VAC

White  
 10-64672-2-00

**Decibel Level**  
**Min:** 61 dB-A @ 2M  
**Max:** 67 dB-A @ 2M

**Dry Time:** Approx. 15 seconds



#### **10-64672-2 TURBO 3-IN-1**

Fully recessed and accessible compliant three-in-one unit. Features paper towel dispenser, high-speed automatic hand dryer with adjustable speed and temperature settings and 26L waste receptacle. Durable 304 stainless steel with satin finish provides seamless design suitable for any washroom. 5 year warranty on hand dryer.

**Overall Dimensions:** 391 x 1407 x 191 mm  
**Wall Opening:** 358 x 1381 x 184 mm

#### **Electrical Specifications:**

Motor: 500 Watt, 22 - 29 KRPM (adjustable), brush type, dual ball bearings  
 Voltage: 220 - 240 VAC, 50/60 Hz  
 Heater: 275 - 500 Watt  
 Current: 3 - 4 Amps @ 240 VAC

**Decibel Level**  
**Min:** 69 dB-A @ 2M  
**Max:** 69 dB-A @ 2M

**Dry Time:** Approx. 15 seconds



#### **10-0135-2 TURBO-TUFF™ SATIN STAINLESS STEEL**

Fast drying, automatic high-speed hand dryer. Infrared sensor with auto-resetting thermostat. Owner-adjustable air speed & temperature with on/off heating options. Blue LED guides user towards air flow. Dryer automatically shuts off after time-out. Durable type 304 satin finish stainless steel cover. Unit is recess mount and requires direct wiring (by an electrician). 5 year warranty.

**Overall Dimensions:** 320 x 400 x 103 mm

#### **Electrical Specifications:**

Motor: 500 Watt, 22 - 29 KRPM (adjustable), brush type, dual ball bearings  
 Voltage: 220 - 240VAC 50/60Hz  
 Heater: 275 - 500 Watt  
 Current: 3 - 4 Amps @ 240 VAC



**Decibel Level**  
**Min:** 63 dB-A @ 2M  
**Max:** 69 dB-A @ 2M

**Dry Time:** Approx. 12 seconds



#### 10-20200-2 TRI-Umph™ HIGH-SPEED HAND DRYER

Fast drying, automatic high-speed hand dryer with an ultra-hygienic triple HEPA filter. Satin look cover: ABS plastic with silver ions. Ergonomic — no need to bend over or bend knees. Air blows down from vents on top. Adjustable air speed and temperature. No water splash-back. 5 year warranty.

**Overall Dimensions:**  
 322 x 588 x 197 mm

**Electrical Specifications:**  
 Motor: 700 Watt, 14 - 18 KRPM (adjustable),  
 brush type, dual ball bearings  
 Voltage: 220 - 240 VAC, 50/60 Hz  
 Heater: 400 - 800 Watt  
 Current: 5 - 7 Amps @ 240 VAC

**Optional Finish:**



**Decibel Level**  
**Min:** 62 dB-A @ 2M  
**Max:** 67 dB-A @ 2M

**Dry Time:** Approx. 15 seconds



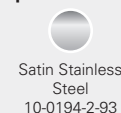
#### 10-0194-2-41 TURBO-Chic MATTE BLACK

Only 100mm deep, this high-speed hand dryer is both compact and stylish and can fit in most confined spaces with no need for a recess kit. Quick drying with infrared sensor, auto-resetting thermostat and adjustable air speed and temperature. Blue LED guides user towards air flow. Includes a carbon filter for prolonged motor life. Dryer automatically shuts off after time-out. 5 year warranty.

**Overall Dimensions:**  
 152 x 268 x 100 mm

**Electrical Specifications:**  
 Motor: 500 Watt, 22 - 29 KRPM (adjustable),  
 brush type, dual ball bearings  
 Voltage: 220 - 240 VAC, 50/60 Hz  
 Heater: 275 - 500 Watt  
 Current: 3 - 4 Amps @ 240 VAC

**Optional Finish:**



**Decibel Level**  
**Min:** 63 dB-A @ 2M  
**Max:** 69 dB-A @ 2M

**Dry Time:** Approx. 15 seconds



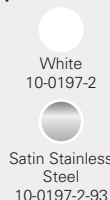
#### 10-0197-2-92 TURBO-Dri™ POLISHED STAINLESS STEEL

Powerful high-speed automatic hand dryer. Quick drying with infrared sensor, auto re-setting thermostat, a 60 second automatic shut off and adjustable air speed and temperature settings. 5 year warranty.

**Overall Dimensions:**  
 205 x 287 x 180 mm

**Electrical Specifications:**  
 Motor: 700 Watt, 14 - 18 KRPM (adjustable),  
 brush type, dual ball bearings  
 Voltage: 220 - 240 VAC, 50/60 Hz  
 Heater: 400 - 700 Watt  
 Current: 5 - 6 Amps @ 240 VAC

**Optional Finish:**



**Decibel Level**  
**Min:** 61 dB-A @ 2M  
**Max:** 67 dB-A @ 2M

**Dry Time:** Approx. 15 seconds



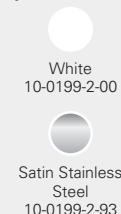
#### 10-0199-2-41 TURBO-Slim™ MATTE BLACK

Only 102 mm deep, this high-speed hand dryer can fit in most confined spaces with no need for a recess kit. Quick drying with infrared sensor, auto-resetting thermostat and adjustable air speed and temperature. On/off heating options. Blue LED guides user towards air flow. Dryer automatically shuts off after time-out. 5 year warranty.

**Overall Dimensions:**  
 270 x 216 x 102 mm

**Electrical Specifications:**  
 Motor: 500 Watt, 22 - 29 KRPM (adjustable),  
 brush type, dual ball bearings  
 Voltage: 220 - 240 VAC, 50/60 Hz  
 Heater: 275 - 500 Watt  
 Current: 3 - 4 Amps @ 240 VAC

**Optional Finish:**







**Decibel Level**  
63 dB-A @2M

**Dry Time:** Approx. 20 seconds

**HDABWHTSG AUTOBEAM: WHITE WITH SILVER GLOSS NOZZLE**

Heavy duty steel automatic hand dryer with sensor operation. Large fan and motor assembly provides a high performance dryer designed for high traffic areas and heavy use. Easy installation with tamper-proof locking. 10 year warranty.

**Overall Dimensions:**  
300 x 251 x 219 mm

**Electrical Specifications:**

Motor: 200 Watt, 5.5 KRPM, brush type, dual ball bearings  
Voltage: 220 - 240 VAC, 50/60 Hz  
Heater: 2200 Watt protected by thermal cut-out  
Current: 10 Amps @ 240 VAC



**Decibel Level**  
64 dB-A @2M

**Dry Time:** Approx. 20 seconds

**HDTDWHTSG TOUCHDRY: WHITE WITH SILVER GLOSS NOZZLE & BUTTON**

Heavy duty steel hand dryer. Solid touch button operation. Large fan and motor assembly provides a high performance dryer designed for high traffic areas and heavy use. Easy installation with tamper-proof locking. 10 year warranty.

**Overall Dimensions:**  
300 x 251 x 219 mm

**Electrical Specifications:**

Motor: 200 Watt, 5.5 KRPM, brush type, dual ball bearings  
Voltage: 220 - 240 VAC, 50/60 Hz  
Heater: 2200 Watt protected by thermal cut-out  
Current: 10 Amps @ 240 VAC

**Optional Finish:**



**HDABPSSPC AUTOBEAM**  
Polished Stainless Steel with  
Polished Chrome Nozzle



**HDABWHTPC AUTOBEAM**  
White with Polished Chrome Nozzle



**HDABWHTSC AUTOBEAM**  
White with Satin Chrome Nozzle



**HDABSSSSC AUTOBEAM**  
Satin Stainless Steel with  
Satin Chrome Nozzle



**Decibel Level**  
55 dB-A @2M

**Dry Time:** Approx. 30 seconds



**Decibel Level**  
66 dB-A @2M

**Dry Time:** Approx. 30 seconds



#### **HDAPWHT APPLAUSE CLASSIC WHITE**

Automatic hand dryer with sensor operation. Perfect for smaller environments requiring low noise levels. A low profile, whisper quiet unit. This design is streamlined, minimal and easy to clean. Durable steel casing with theft resistant torx screws. 1 year warranty.

**Overall Dimensions:**  
250 x 361 x 146 mm

#### **Electrical Specifications:**

Motor: 100 Watt, 2.8 KRPM, dual ball bearings  
Voltage: 220 - 240 VAC, 50/60 Hz  
Heater: 900 Watt, protected by thermal cut-out  
Current: 4 Amps @ 240 VAC



#### **10-0165-2 APPLAUSE PLUS**

Compact automatic hand dryer. Modern, durable design suitable for small areas. Quick drying, no touch, energy efficient operation. Blue LED guides user towards air flow. Standard white colour. 3 year warranty.

**Overall Dimensions:**  
289 x 285 x 99 mm

#### **Electrical Specifications:**

Motor: 200 Watt, 5.5 KRPM, brush type, dual ball bearings  
Voltage: 220 - 240 VAC, 50/60 Hz  
Heater: 1600 Watt  
Current: 7.5 Amps @ 240 VAC

#### **Optional Finish:**



**HDAPSSS APPLAUSE**  
Satin Stainless Steel



**HDAPPSS APPLAUSE**  
Polished Stainless Steel



ASI JD MacDonald Pty Ltd  
**Free Call: 1800 023 441**  
Email: [enquiry@asijdmacdonald.com.au](mailto:enquiry@asijdmacdonald.com.au)  
[www.asijdmacdonald.com.au](http://www.asijdmacdonald.com.au)