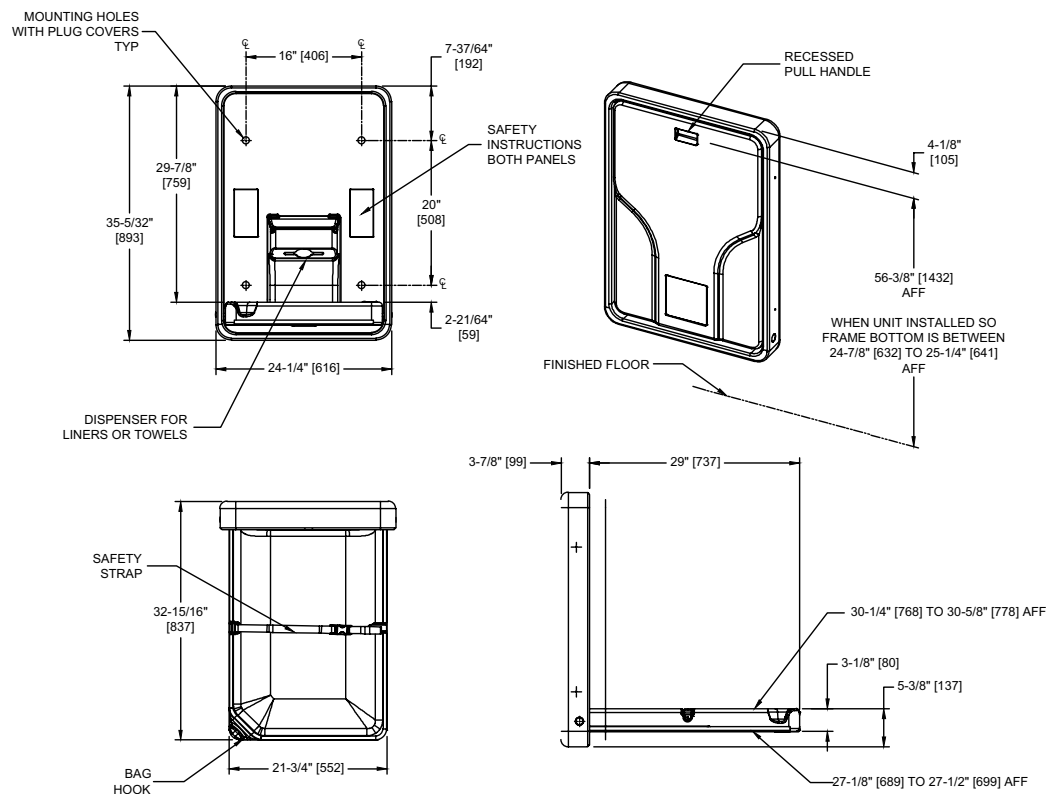


BABY CHANGING STATION, VERTICAL – PLASTIC, SURFACE MOUNTED

Baby Safe Solutions



NOTE:
ALL DIM'S INCH [MM]
CSA = CONCEALED SCREW AXIS

SUSTAINABILITY

MR 4.1 (1) MR 6 (1) EQ 4.2 (1)
MR 4.2 (1) EQ 4.1 (1) EQ 4.4 (1)

PRODUCT OVERVIEW

Surface Mounted Vertical Baby Changing Station shall protrude no more than 102mm from wall when in retracted position. Unit shall comply with ASTM F2285-04 and EN 12221-1. Unit has a pull handle and concealed damped gas spring, assisting in easy operation. Can be fabricated of FDA-approved fungus and bacteria-resistant plastic. Unit supports an infant up to 3 ½ years old and a weight up to 23 kg. Tested during development to sustain 113 kg static load with minimal deflection. Its vinyl-coated, adjustable safety strap assures child protection.

KEY FEATURES & SPECIFICATIONS

- ASTM F-2285, ASTM F-2388, G-21, G-22, ANSI Z535, ANSI 117.1, EN 1222-1, and EN 1221-2 (Including A1:2013) compliant. Damped gas spring aids one handed operation using less than 5lbs force (22.2N) - no tight grasping, pinching or twisting of the wrist.
- Includes one integral bag hook and bed-liner dispenser (convertible to a multi-fold towel dispenser).
- Changing Surface is fabricated of FDA-approved fungus and bacteria-resistant HDPE.
- Surface Mounted. Designed to support an infant up to 3 ½ years old and a weight up to 23 kg. Tested during development to sustain 113 kg static load with minimal deflection.
- The bed is designed to cradle a child's body. An adjustable two-part, vinyl-coated safety strap with a Sure-Lock latch aids in safety.
- AS1428.1 compliant when used with the supplied handle with strap.

OPERATION & MAINTENANCE

Unit platform is shaped to keep a child restrained from rolling out of the bed. Unit is easily opened and closed by user with one hand in any location and handle cavity is provided on door face for preferred use. Unit is operable with less than 5 lbf (22.2N) while not requiring any tight grasping, pinching or twisting of the wrist. Bed liner/towel dispenser presents liners or towels for user hygiene and convenience. Dispenser lid is provided for sanitary protection and ease of loading of wipes or liners. Safety strap is easily adjustable by user for baby size and Sure-Lock latch securely resists opening until released by opposing finger pressure by adult caregiver/parent. Liners/towels are easily replenished by service personnel as required.

TECHNICAL INFORMATION / PRODUCT PROPERTIES

Property	Value
Dimensions	Closed: 616 x 893 x 98 mm Open: 616 x 893 x 837 mm
Construction	High-Density Polyethylene (HDPE) FDA-approved fungus and bacteria-resistant plastic bed
Mounting	Surface Mounted
Capacity	Supports an infant up to 3 ½ years old and a weight up to 23 kg. Tested during development to sustain 113 kg static load with minimal deflection.

INSTALLATION

Installation instructions along with operation and maintenance manual are provided with each unit. Surface mount unit using hardware supplied through recessed mounting holes. Hardware kit supplied has fasteners suitable for metal or wood stud walls in dry locations and general hollow wall construction where adequate substrate strength is obtained. Fasteners and anchors for masonry walls are not provided. Wall reinforcement must be suitable to sustain transfer of maximum unit loading. Mounting hole plug covers are supplied to conceal fasteners after installation.

1. Locate wall studs at 406mm OC for fastening the station. If two (2) wall studs cannot be used, use two (2) screws into ONE stud and drill pilot holes and install toggle fasteners securely in the wall at non-stud location.
2. Attach unit to wall studs with four (4) 1/4" x 3" long Phillips pan head self-threading screws through flat washers.
3. Where wall studs are not available attach with four (4) 1/4"- 20 x 3" pan head bolts with flat washers into toggles or expansion nuts.

WARRANTY

Five (5) Years from date of invoice.

OPTIONAL

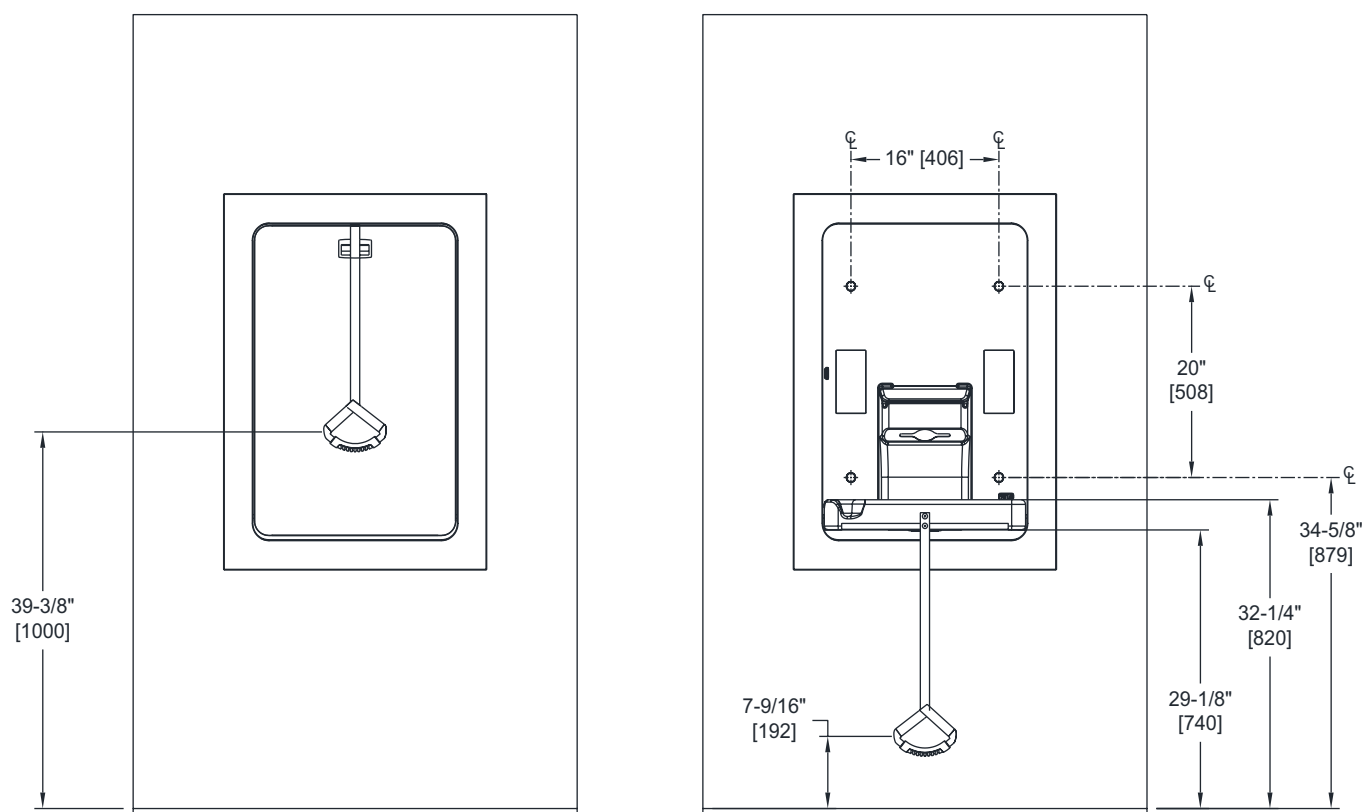


FIG.11
INSTALLATION COMPLETE WITH
DIMENSIONS AND APPEARANCES
OPEN AND CLOSED