



SPECIFICATION

Soap Dish with Drain Holes shall be fabricated of stainless steel alloy 18-8, type 304. Soap dish shall be of drawn seamless construction and shall be fabricated with integral ribs. Support post shall be 25mm x 13mm rectangular tubing with formed mounting flange and bracket welded on end. A stainless steel setscrew shall be provided on bottom perimeter of flange to lock unit to mounting plate. Mounting plate shall be provided and shall be 18 gauge. Surface finish shall be bright or satin as chosen by option and indicated by code suffix.


INSTALLATION

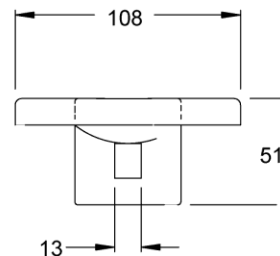
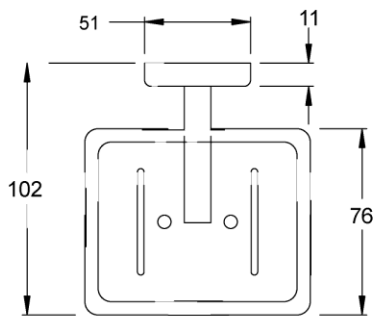
Surface mount unit on wall using №10 self-tapping screws (by others) through holes provided in mounting plate into suitable prepared mountings (by others) or other suitable mounting hardware (by others) to suit wall conditions. Hang post and flange assembly on mounting plate and tighten setscrew to lock unit to plate. For mounting height standards refer to current Building Code of Australia for able bodied and/or disabled use.

WARRANTY

One year.

Soap Dish with Drain Holes shall be Model No. 10-7320-B (bright finish) or 10-7320-S (satin finish) as supplied by ASI JD MacDonald.

 All ASI JD MacDonald disabled compliant products when installed must be in accordance with AS1428 to ensure the specified product is complying with all washroom specification requirements.



CONCEALED MOUNTING DETAIL

