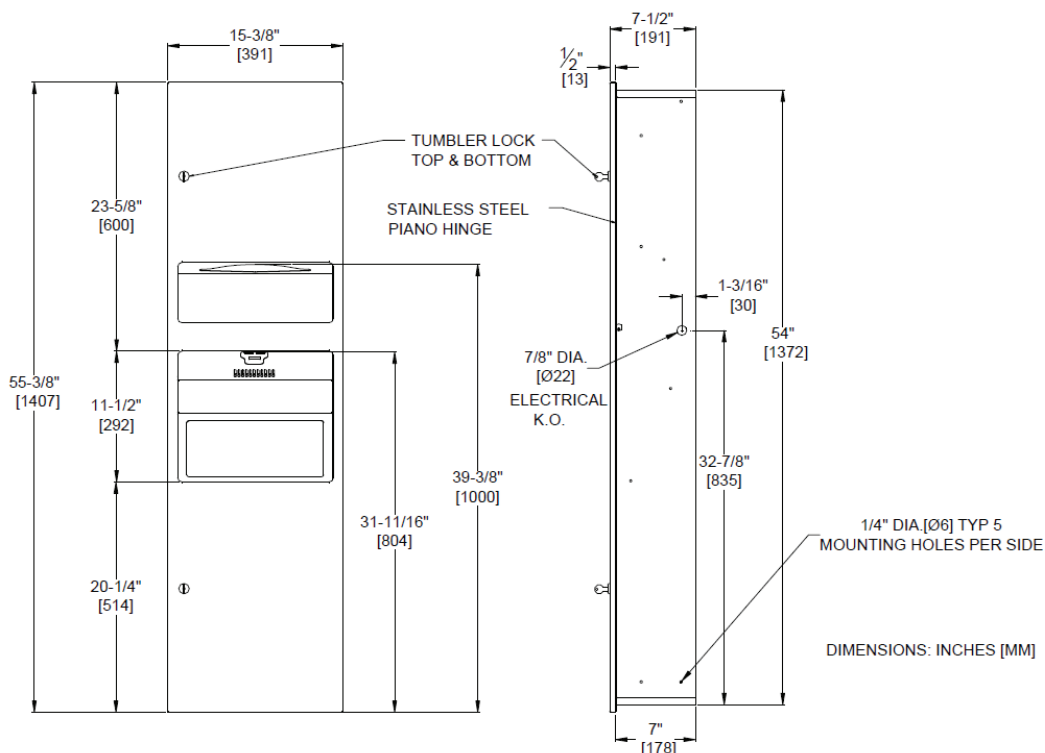


TURBO 3IN1 PAPER TOWEL DISPENSER, HIGH-SPEED HAND DRYER & WASTE BIN – SIMPLICITY COLLECTION
Hand Dryers


Scan for
information


SUSTAINABILITY

PRODUCT OVERVIEW

Integrated stainless steel cabinet with three features in one installation. Manufactured from high quality 304 stainless steel. Provides a fully automatic high-speed hand dryer with adjustable air speed and temperature settings, paper towel dispenser and large capacity waste bin (26L). Easy installation and service via a security locked front door. Protected for shipment by PVC coating on all surfaces.

KEY FEATURES & SPECIFICATIONS

- Electrical Supply: AC, 220–240V 50/60Hz, 1000 Watt, 3-4A
- Motor: 500 Watt, Brush Type, Dual Ball Bearings
- RPM: 22,000 - 29,000 (adjustable)
- Element: 275-500 Watt (adjustable)
- Air Speed: 199 – 296 km/hr (adjustable)
- Noise Level: 60.5 – 67.2 dB-A @2M
- Drying Time: Approx. 15 seconds
- Weight: 27kg (Shipping)
- Electrical Safety Requirements: AS/NZS 60335.2.23:2004
- Protection Category: IP24

OPERATION & MAINTENANCE

Paper towels are manually withdrawn through dispensing slot and feed properly until depleted. Unit will continue to feed towels properly when correctly reloaded with a partial load in place. User activates dryer by placing hands in the sensor zone indicated by graphic on door. Drying time is automatically initiated as long as movement is sensed up to a maximum of two (2) minutes to prevent accidental hold-on. Dryer automatically shuts off after time-out when hands are removed from the sensor zone. Refill dispenser by unlocking door and replacing towels for an empty or partially empty unit. Dispenser supply is replenished and waste container is emptied manually on cycles determined by maintenance needs. Locking full-face door over compartments prevents unauthorised access or removal. Full cover and spring-hinge flap door on WR prevents unsightly overloads.

TECHNICAL INFORMATION / PRODUCT PROPERTIES

Property	Value
Dimensions	Overall Dimensions: 391 x 1407 x 191 mm Rough Wall Opening (RWO): 358 x 1381 x 184 mm
Construction	Satin finish stainless steel 304 grade 10-764672-SR3-5 small cavity trim for semi recessed installations. 10-764672-SM trim for surface mount installations.
Mounting	Recessed
Electrical	220-240V

INSTALLATION

Unit is mounted in wall recess using No10 (M5) self-tapping screws (by others) through concealed mounting holes provided. Recommended mounting height of 1397mm to centerline of towel dispenser slot requires top of Rough Wall Opening (RWO) to be 1823mm AFF. See unit diagram for electrical service cable rough-in location. Electric service of 220- 240VAC 20A 50/60 Hz (provided by others) is brought to RWO at location indicated on diagram and is hooked up (by others) in accordance with schematic and OM & IG provided with unit. Dryer is mounted to chassis wiring box with four (4) 1/4-20 pan head screws (provided) through bushings in heavy-duty back plate. Electrical service is connected (by Electrician) prior to installing cover. Cover is secured to back plate with recessed socket-pan-head tamper-resistant pin-hex bolts (supplied) with security pin-hex driver (supplied). Note that top of RWO is 1/2" (13mm) below top of unit. *The unit must be at 100mm from the finished floor level to comply with Australian Disabled Standards 1428.1 & 1428.2.

WARRANTY

5 years (first 3 years parts & labour, remaining 2 years parts only). One year warranty on cabinet.