



## SPECIFICATION

Security Framed Mirror with Rounded Corners for chase mounting shall be fabricated of one piece formed alloy 18-8 stainless steel, type 304, No 18 gauge with No 8 mirror polish. Installed unit shall project ¼" (6mm) from wall. Rear of frame shall have welded on six (6) ¼-20" internally threaded posts. Six (6) ¼-20" threaded rods with washers and nuts shall be supplied as per length specified at time of order to suit wall thickness.

## INSTALLATION

Drill six (6) holes through wall to correspond to six (6) welded-on threaded posts. Insert threaded rods into holes and secure to threaded posts and to wall with six (6) washers and nuts (supplied). The length of the rods is determined by the thickness of the wall on which the mirror will be mounted. Specify suffix for the thickness of the wall in the following increments (eg. 10-108-14-KT6):

### Wall Thickness

Up to 152mm

152mm to 203mm

Over 203mm, specify thickness:

### Suffix

LT6

68

GT8=xxx

## GLAZING OPTION

Normal selection of alloy 18-8 stainless steel, type 304, No 18 gauge, No 9 mirror polish finish is supplied as standard unless other is specified. Specify option by adding suffix to Model No (e.g. 10-108-31-68)

## WARRANTY

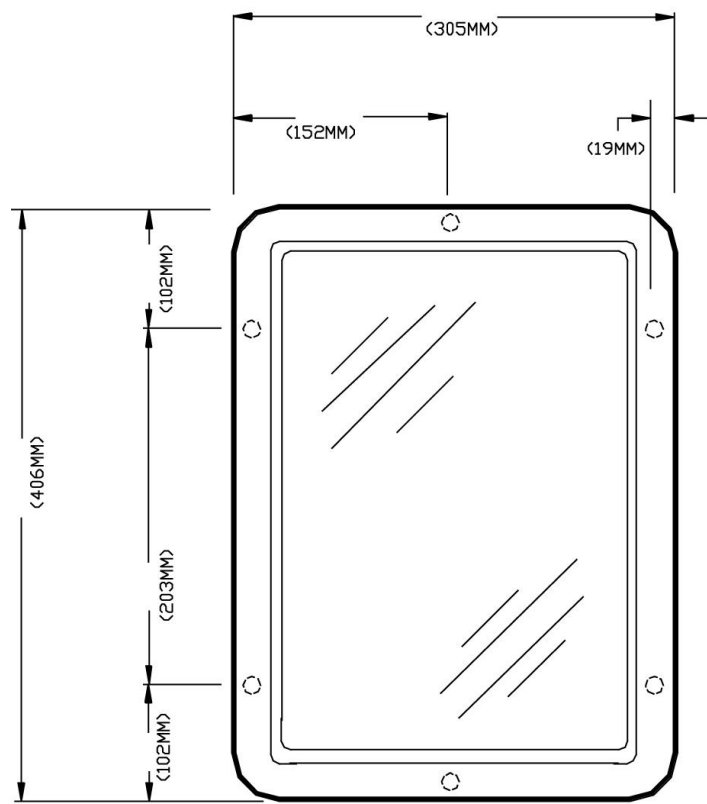
One year.

**Security Framed Mirror with Rounded Corners** shall be Model No 10-108 as supplied by ASI JD MacDonald.

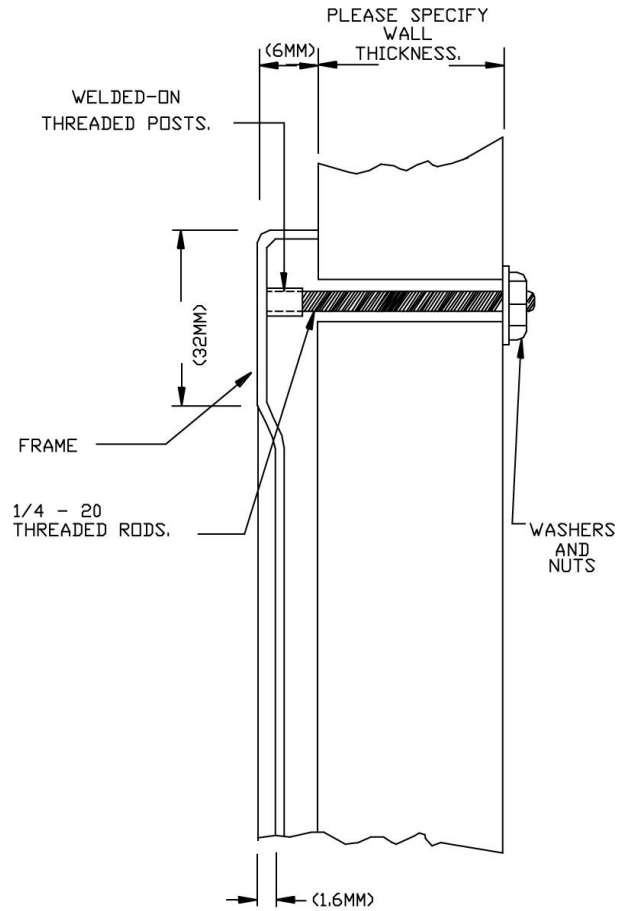
⚠ All ASI JD MacDonald disabled compliant products when installed must be in accordance with AS1428 to ensure the specified product is complying with all washroom specification requirements.

# Security Framed Mirror with Rounded Corners

Model No. 10-108



ELEVATION



PARTIAL SECTION