

Hand Dryers





3-IN-1 PAPER TOWEL DISPENSER WITH WASTE RECEPTACLE AND AUTOMATIC ELECTRICAL HAND DRYER HAS GONE HIGH-SPEED

Decibel Level
 Min: 69 dB-A @ 2M
 Max: 74 dB-A @ 2M
 Dry Time: Under 15 seconds



10-64671-2-A SELECT CLASSIC G2 3-IN-1

Integrated stainless steel cabinet with three features in one installation. Manufactured from high quality 304 stainless steel Select Classic G2 provides a fully automatic high speed hand dryer, paper towel dispenser and large capacity waste bin (26L). Easy installation and service via a security locked front door. Protected for shipment by PVC coating on all surfaces.

Overall Dimensions:
 440 x 1515 x 202 mm
 Wall Opening:
 408 x 1494 x 120 mm (minimum)

Electrical Specifications:
 Motor: 500 Watt, 16 - 29 KRPM
 Adjustable, brush type,
 dual ball bearings
 Voltage: 220 - 240 VAC, 50/60 Hz
 Heater: 325 - 500 Watt
 Current: 4.2 Amps @ 240 VAC



Decibel Level
 Min: 69 dB-A @ 2M
 Max: 74 dB-A @ 2M
 Dry Time: Under 15 seconds

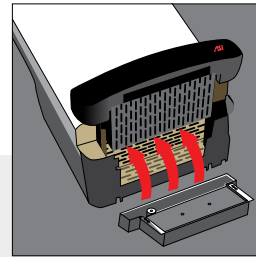


10-64672-2 TURBO 3-IN-1

Fully recessed and accessible compliant three-in-one unit. Features paper towel dispenser, high speed hand dryer and 26L waste receptacle. Durable 304 stainless steel with satin finish provides seamless design suitable for any washroom.

Overall Dimensions:
 391 x 1407 x 191 mm
 Wall Opening:
 358 x 1381 x 184 mm
 Electrical Specifications:
 Motor: 500 Watt, 16 - 29 KRPM Adjustable
 Voltage: 220 - 240 VAC, 50/60 Hz
 Heater: 325 - 500 Watt
 Current: 4.2 Amps @ 240 VAC





Decibel Level
Min: 63 dB-A @ 2M
Max: 67 dB-A @ 2M

Dry Time: Approx. 12 seconds



10-2020-2 TRI-Umph™ HIGH-SPEED HAND DRYER

Satin look cover: ABS plastic with silver ions. Ergonomic — no need to bend over or bend knees. Air blows down from vents on top. No water splash-back. 5-year warranty.

Overall Dimensions:
322 x 588 x 197 mm

Electrical Specifications:
Motor: 750 Watt, 11 – 19 KRPM, Adjustable
Brush type, dual ball bearings

Voltage: 220 - 240 VAC, 50/60 Hz
Heater: 400 - 900 Watt
Current: 5 Amps @ 240 VAC

Optional Finish:



White
10-20201-2

- Ultra hygienic — Over 99% of airborne bacteria and particles as small as 0.3 microns are eliminated with the removable Super Filter System:
 - » First Layer: HEPA filter
 - » Second Layer: Carbon filter
 - » Third Layer: Anti-microbial filter
- Anti-microbial silver ion treatment added to the ABS cover provides an additional layer of germ protection

OPTIONAL CERAMIC BACKPLATE for the TRI-Umph™ Hand Dryer

10-A0247-TRBS WALL PROTECTOR BACKSPLASH PLATE WITH FRAME

- Large absorbing/evaporating ceramic plate covers the wall directly behind the opening of the unit
- Plate matches the ceramic plate on hand dryer
- Installation can be retroactive



Decibel Level
Min: 65 dB-A @ 2M
Max: 69 dB-A @ 2M

Dry Time: Approx. 12 seconds



10-0197-2-92 TURBO-Dri™ POLISHED STAINLESS STEEL

Quick drying, powerful yet quiet. Infrared sensor, auto re-setting thermostat and a 60 second automatic shut off. 5-year warranty.

Overall Dimensions:
205 x 287 x 180 mm

Electrical Specifications:
Motor: 750 Watt, 7 – 18 KRPM - Adjustable,
Brush type, dual ball bearings

Voltage: 220 - 240 VAC, 50/60 Hz
Heater: 400 - 900 Watt
Current: 5 - 7 Amps @ 240 VAC

Optional Finish:



White
10-0197-2



Satin Stainless Steel
10-0197-2-93



Decibel Level
Min: 69 dB-A @ 2M
Max: 74 dB-A @ 2M

Dry Time: Under 15 seconds



10-0199-2-93 TURBO-SLIM™ SATIN STAINLESS STEEL

Only 102 mm deep, this high-speed dryer can fit in most confined spaces with no need for a recess kit. Quick drying with infrared sensor, auto-resetting thermostat and adjustable air speed and temperature. On/off heating options. Dryer automatically shuts off after time-out. 5-year warranty.

Overall Dimensions:
270 x 215 x 102 mm

Electrical Specifications:
Motor: 500 Watt - 16 - 29 KRPM - Adjustable,
Brush type, dual ball bearings

Voltage: 220 - 240 VAC, 50/60 Hz
Heater: 325 - 500 Watt
Current: 4.2 Amps @ 240 VAC

Optional Finish:



White
10-0199-2-00



Decibel Level
63 dB-A @2M

Dry Time: Under 25 seconds



HDABWHTSG AUTOBEAM: WHITE WITH SILVER GLOSS NOZZLE

Heavy duty steel automatic hand dryer with sensor operation. Large fan and motor assembly provides a high performance dryer designed for high traffic areas and heavy use. Easy installation with tamper-proof locking. 10 Year Warranty.

Overall Dimensions:
300 x 251 x 219 mm

Electrical Specifications:
Motor: 200 Watt, 5.5 KRPM
Voltage: 220 - 240 VAC, 50/60 Hz
Heater: 2200 Watt protected by thermal cut-out
Current: 10 Amps @ 240 VAC

Optional Finish:



HDABPSSPC AUTOBEAM
Polished Stainless Steel with Polished Chrome Nozzle



HDABWHTPC AUTOBEAM
White with Polished Chrome Nozzle



HDABWHTSC AUTOBEAM
White with Satin Chrome Nozzle



HDABSSSC AUTOBEAM
Satin Stainless Steel with Satin Chrome Nozzle



Decibel Level
64 dB-A @2M

Dry Time: Under 25 seconds



HDTDWHTPC TOUCHDRY: WHITE WITH POLISHED CHROME NOZZLE & BUTTON

Heavy duty steel hand dryer. Solid touch button operation. Large fan and motor assembly provides a high performance dryer designed for high traffic areas and heavy use. Easy installation with tamper-proof locking. 10 Year Warranty.

Overall Dimensions:
300 x 251 x 219 mm

Electrical Specifications:
Motor: 200 Watt, 5.5 KRPM
Voltage: 220 - 240 VAC, 50/60 Hz
Heater: 2200 Watt protected by thermal cut-out
Current: 10 Amps @ 240 VAC

Optional Finish:



HDTDWHTSG TOUCHDRY
White with Silver Gloss Nozzle & Button



HDTDWHTSC TOUCHDRY
White with Satin Chrome Nozzle & Button



Decibel Level
66 dB-A @2M

Dry Time: Under 30 seconds



10-0165-2 APPLAUSE PLUS

Compact automatic hand dryer. Modern, durable design suitable for small areas. Quick drying, no touch, energy efficient operation. Standard white colour. 3 year warranty.

Overall Dimensions:
289 x 285 x 99 mm

Electrical Specifications:
Motor: 200 Watt, 7.5 KRPM
Brush type, dual ball bearings
Voltage: 220 - 240 VAC, 50/60 Hz
Heater: 1620 Watt
Current: 7.5 Amps @ 240 VAC



Decibel Level
55 dB-A @2M

Dry Time: Under 30 seconds



HDAPWHT APPLAUSE CLASSIC WHITE

Automatic hand dryer with sensor operation. Perfect for smaller environments requiring low noise levels. A low profile, whisper quiet unit. This design is streamlined, minimal and easy to clean. Durable steel casing with theft resistant torx screws. 1 year warranty.

Overall Dimensions:
250 x 361 x 146 mm

Electrical Specifications:
Motor: 100 Watt, 2.8 KRPM
Voltage: 220 - 240 VAC, 50/60 Hz
Heater: 900 Watt, protected by thermal cut-out
Current: 4.2 Amps @ 240 VAC

Optional Finish:



HDAPSSS APPLAUSE
Satin Stainless Steel



HDAPSSS APPLAUSE
Polished Stainless Steel

WELCOME TO THE SINGLE LARGEST COLLECTION OF WASHROOM ACCESSORIES ANYWHERE—BAR NONE



Hand Dryers



Soap Dispensers



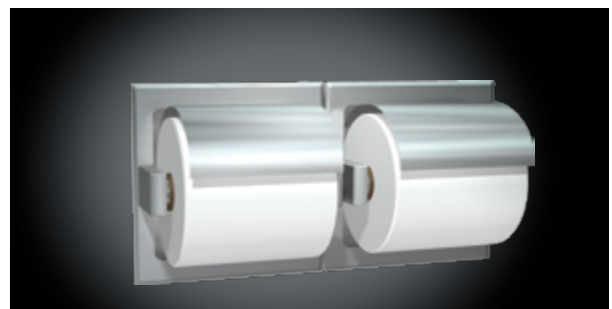
Mirrors



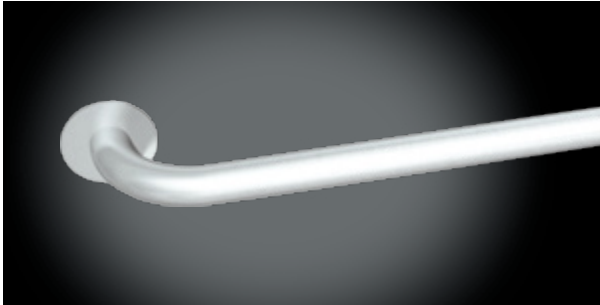
Combination Units



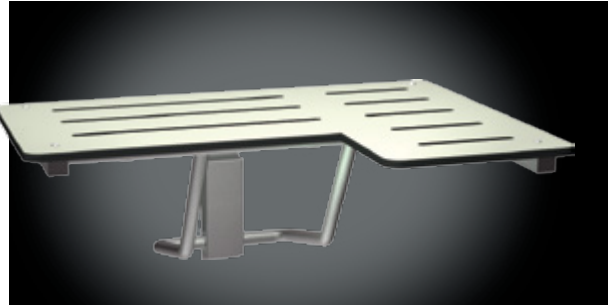
Bathroom Accessories



Toilet Paper Dispensers



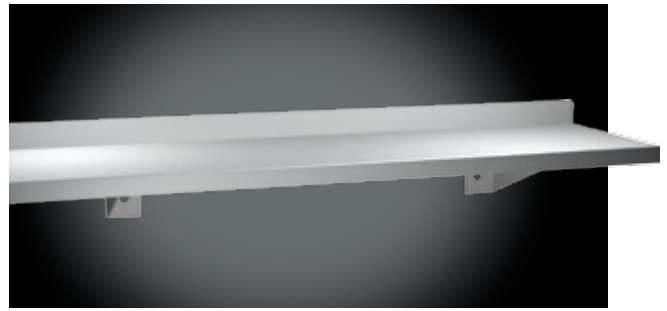
Grab Rails



Shower Seats



Baby Change Stations



Shelves



Shower Products



Waste Bins



Back Rests



Security Accessories

HAND DRYERS WARRANTY

All component parts of all dryers shall be warranted to be free of defects in material and workmanship for the warranty period.

ASI JD MACDONALD GUARANTEE

Products are guaranteed to be free from defects in workmanship and material for the warranty period from date of purchase. Any products returned under this guarantee will be repaired or replaced at no charge.

Illustrations and descriptions herein are applicable to production as of the date of this catalog. The manufacturer reserves the right to make changes and improvements in designs and dimensions at any time.

ASI JD MACDONALD

In 1959, JD MacDonald expanded into washroom products including the distribution of imported electric hand dryers.

During 1985, the need for improved products was identified and JD MacDonald commenced the manufacture of electric hand dryers locally. Significant product development has occurred since that time including the introduction of one of the world's first automatic hand dryers. This development has continued and we now offer a range of unique products designed in Australia with the emphasis being on appearance, functionality and durability.

In 2008, JD MacDonald expanded the childcare equipment range so it now offers up to 10 product variations. Also introduced in 2008 was the new bathroom accessories collection to our already well established commercial washroom accessories range.

JD MacDonald launched the Select Classic range in 2009. Suited to the more sophisticated and stylish washroom, the streamlined appearance provides everything you need; including paper towel, hand dryer and waste disposal all in the one unit.

In April 2013, American Specialties Incorporated (ASI) purchased the JD MacDonald business. JD MacDonald have had a very positive business association with ASI since 2001, when we became a distributor for ASI's Commercial Washroom Products. The new business in Australia is renamed 'ASI JD MacDonald'.

ASI

ASI is your single source solution for Washroom Accessories, Toilet Partitions, Lockers and other storage products worldwide.

Partitions — The most complete line available in the industry — stainless steel, solid plastic, powder coated steel, phenolic, colour-thru phenolic and plastic laminate partitions. Since 1957, we have offered designers worldwide a myriad of choices to satisfy every need.

Lockers — The best engineered lockers and shelving in the industry, period. A wide range of colors and materials (including steel, solid plastic and phenolic) offer the perfect solution for any storage application.

Our mission is to make our customers successful by providing value that exceeds price and an excellent service experience.

We do this by providing superior design, the broadest range of quality products in the industry, and state-of-the-art manufacturing to ensure that we have whatever our customers need, whenever they need it.

With experienced architectural representatives and customer service teams, we are here to help you deliver on projects that range from world-class office buildings, educational facilities, sports venues, and government buildings to hospitals, chain stores, and hospitality / entertainment complexes.



ASI JD MacDonald
Melbourne (Head Office)
48 Smith Road, Springvale, Victoria 3171.
Phone: 1800 023 441 Fax: (03) 9548 1141
E-mail: enquiry@asijdmacdonald.com.au
Web: www.asijdmacdonald.com.au